

**SURFALITE**<sup>TM</sup>  
SUPER THIN SURFACES  
**7MM**

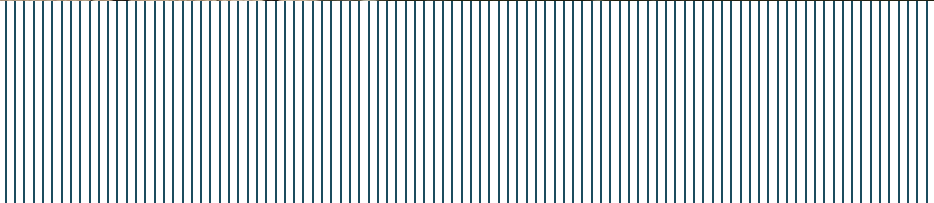


**SANTA MARGHERITA**  
EFFICIENCY BONDED 





LIGHT WAFER & DARK MOSS





# Table Of Contents

Page	Description
06	Company Profile
08	What is Surfalite?
10	Characteristics
14	Applications
18	Shizen Collection
22	Colors
30	Care & Maintenance
34	Technical Data



WHITE FEATHER

## Company Profile

Long term experience, constant research and innovation, with particular attention to the growth of all markets, both home and international, commercial and residential, is the hallmark of each Santamargherita product.

Santamargherita S.p.A. has operated since 1962, by the two founding families that still own it today. The HQ of Santamargherita is located in Volargne (Verona), the heart of the Italian Stone District. It includes production plants, R&D and offices.

Santamargherita is driven by a passion handed down from generation to generation and deeply rooted in the culture, tradition and skills of Valpolicella, a fascinating land stretching between Garda lake and Verona.

Though we export to over 70 countries, we still engineer, manufacture and test all our products in the same place where we started more than 60 years ago. Our dedication to sustainability and creativity has remained unchanged.

Here we welcome our customers, architects, designers, fabricators, installers and innovators to share ideas and turn them into reality. Our flexibility lets us meet new architectural trends, both in the commercial and the residential building sectors.

We can do it with our standard ranges, made from elegant and subtle hues, and with the more innovative and exclusive lines made from beautiful creative colors and exotic finishes.



**SANTAMARGHERITA S.P.A. HEADQUARTERS**  
Volargne, Verona - Italy



# What is Surfalite®?

Surfalite® is an advanced surface series consisting of slabs 330 x 165 x 0.7cm, created thanks to Santamargherita's long experience and particular attention to research and development. Surfalite® has features never seen before in such a thin material, including outstanding weight performance, as shown by the following comparison:

Slab Type	Thickness	Weight
Standard	3 cm	78-80 kg/sqm
Standard	2 cm	48-54 kg/sqm
Standard	1.2 cm	32 kg/sqm
Surfalite	7 mm	17 kg/sqm

Thanks to its properties, Surfalite® can be used in multiple applications, revolutionizing the creative possibilities of interior design: Surfalite® maintains the same technical features that has made engineered stone famous and well spread all over the world:

Water Absorption	< 0.10%
Moh Hardness	Up to 7 Mohs
Density	2300 - 2350 kg/m3
Scratch Resistance	120 - 180 mm
Chemical Resistance	cl. C4

AURUM STRAND & BLACK NIMBUS



# Characteristics

The 7MM of Surfalite® allows for revolutionary design solutions in new sectors, thanks to its characteristics.



## 7MM OF EASINESS

Cladding, coverings, surfaces: Surfalite® slabs are suitable for many different design applications. Its lightness and thinness enable it to be easily applied on already existing surfaces, without the need to replace them. Surfalite® is the real answer for the realization of certain spaces, such as bathrooms and kitchens in wider residential buildings.



## 7MM OF VERSATILITY

The minimum thickness of Surfalite® slabs, in addition to their wide size (330 x 165 cm), allows one to create their own style of fittings which can cover every kind of surface, providing sophistication anywhere. Surfalite® comes from Santamargherita's history of developing revolutionary products ready to be molded by the creative mind of designers.



## 7MM OF LIGHTNESS

The lightness of Surfalite® slabs allows it to cover surfaces which, until now, could not be clad with such materials as 2 and 3 cm engineered surfaces. Surfalite® especially addresses the interior decoration and furniture sectors, which are very sensitive to the marriage between luxurious finishes and lightness of material.



## 7MM OF RESISTANCE

Surfalite® is above all a guarantee of quality; the surface preserves engineered stone's typical properties, being resistant to scratching, easy to maintain and made to last. Surfalite® turns out to be particularly suitable for the furniture in public buildings, HoReCa and special residential projects.



## 7MM OF ELEGANCE

Surfalite® gives elegance to the surrounding environment and allows for the creation of sophisticated solutions for both public and private spaces. This advanced surface offers a range of colors and textures that can be easily combined with one another and are available in two different finishes.



## 7MM OF INNOVATION

Surfalite® is extremely innovative: no other product can compete with its characteristics. It is the result of Santamargherita's extensive research in the worlds of architecture and design.



## 7MM OF PRACTICALITY

Due to the reduction of the slab's weight, Surfalite® has considerable logistic advantages. The simplification of material handling results in a sensible lowering of costs. Surfalite® allows one to save money and time when renovating kitchens and vanity tops, without sacrificing on the benefits of agglomerated stone.







# Applications

COUNTERTOPS



Kitchen  
Countertops



Kitchen  
Backsplashes



Kitchen  
Hood Wraps



Kitchen  
Islands



Bathroom  
Vanities



Integrated  
Sinks



Commercial  
Bathrooms

CUSTOM APPLICATIONS



Private  
Planes



Rail  
Cars



Recreational Vehicle  
(RV) Interiors



Boat/Yacht  
Interiors



Retail Display  
Stands



Public Work Space  
Build Out



Office  
Spaces



Elevator  
Walls/Flooring



Desks



Tables

WALL CLADDING



Interior



Shower  
Walls



Bathtub  
Surround



Wainscot



Television  
Niches



Accent  
Walls

FLOORING



Indoor  
Areas



Stairs



AURUM STRAND







# Shizen Collection

Designed by: Giuseppe Bavuso



5W0

WHITE DUST



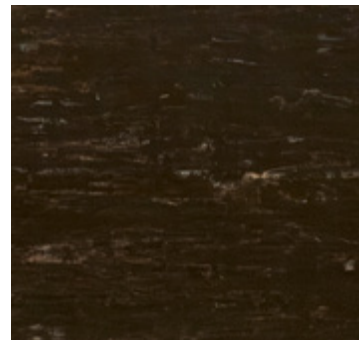
5W1

LIGHT WAFER



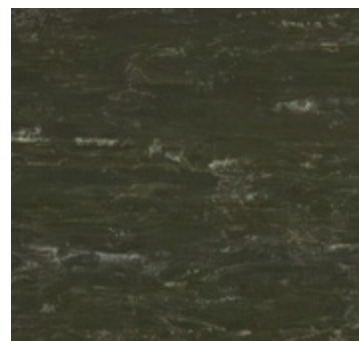
5W2

GRAY FEATHER



5W3

SEQUOIA  
BARK



5W4

DARK MOSS



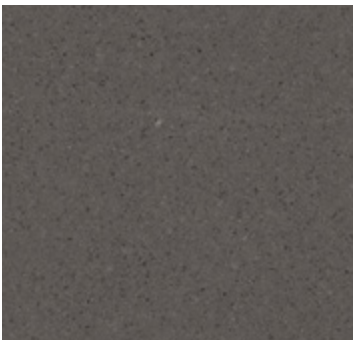
WHITE DUST







Colors



CALEDONIA



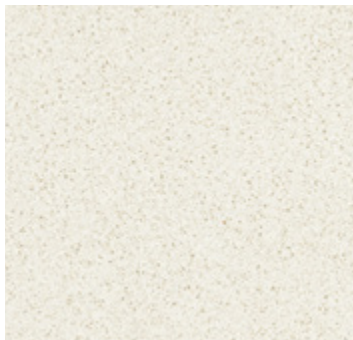
WHITE  
FEATHER



Design Patent No.  
015013553-0004

FROZEN  
TUNDRA

While Supplies Last



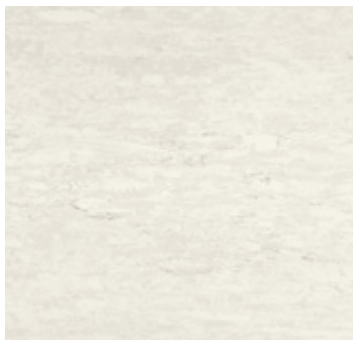
ISTRIA



Design Patent No.  
015013553-0003

FIRST SNOW

While Supplies Last



Design Patent No.  
015013553-0005

HEAVEN  
WHITE

While Supplies Last



FIRST SNOW







Colors



CARNIA



NERO



015013553-0006  
SAND DUNES



BLACK  
NIMBUS



AURUM  
STRAND



Design Patent No.  
015013553-0007  
SANDY WISP

While Supplies Last



SANDY WISP







## Care & Maintenance



### POST-FABRICATION CLEANING

Once the slabs have been fabricated, remove any residue with water and a clean cloth. Thoroughly dry the surface. Deep clean the surface by spraying an acidic or slightly alkaline pH detergent specifically designed for resin bonded engineered stones, and consistently spread it with a nonabrasive sponge. Allow the detergent to work for 5 minutes, then thoroughly rinse with water until the detergent has been completely removed. Remove the excess water with a cloth and allow to dry. If the surface is dull or shows dull areas after this process, rinse again and allow to dry. If the surface still shows dirt or dull areas, repeat the whole deep cleaning process.



### PROTECTIVE

Surfalite® surfaces, both in polished and silk finish are acid and scratch resistant with virtually no absorption of liquids. All Surfalite® slabs leave the factory without any kind of protective surface treatment. While no protective treatment is recommended for polished surfaces, due to greater surface roughness, silk finish surfaces can be treated with products specifically for resin bonded engineered stone, which protect it against oily and aqueous stains and make cleaning easier. Neutral protective treatments are available on the market, which leave the original color unaltered, as well as toners that enhance it. If the counter is intended for contact with food, we recommend using suitable treatments.



### CLEANING AFTER INSTALLATION

During the installation mask the joints and ensure that the silicone will not drip or flow out of the joints onto the surface. Only use a neutral silicone to install the countertop. Remove the excess hardened silicone with a new razor blade, being careful not to scratch the surface. After all assembly operations have been completed, clean the counter thoroughly with a neutral or slightly acidic detergent specifically for resin bonded engineered stones.



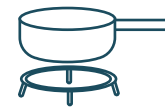
### CLEANING DIFFICULT STAINS

Surfalite® countertops are highly resistant to staining. However, cleaning difficult stains may require special action, especially if these stains are not removed promptly. Deep clean the surface by spraying an acidic or slightly alkaline pH detergent specifically designed for deep cleaning resin bonded, engineered stone countertops, and consistently spread it with a non-abrasive cloth (such as 3M Scotch-Brite). Allow the detergent to work for 5 minutes, then thoroughly rinse with water until the detergent has been completely removed. Remove the excess water with a cloth and dry. Should the stain not be completely removed, repeat the whole process. If the counter has been treated with a protective enhancer, any thorough cleaning may have removed the treatment as well, highlighting a lighter area especially on dark surfaces. To make the color of the surface even again, the toner should be applied again, if necessary, after removing the old treatment from the entire counter.



### DAILY CLEANING

The daily cleaning of Surfalite® surfaces is done using a damp cloth or paper towel and, if needed, a small quantity of neutral or slightly acidic pH detergent specifically designed for the daily cleaning of resin bonded engineered stone surfaces. Spread the detergent on the surface and let it work for some seconds, rinse with a cloth or water, then carefully dry the surface. Compared to polished surfaces, honed or textured surfaces tend to get dirty more easily and therefore, if limescale deposits, fingerprints, metallic marks, or other types of stains are present, more thorough cleaning may be required.



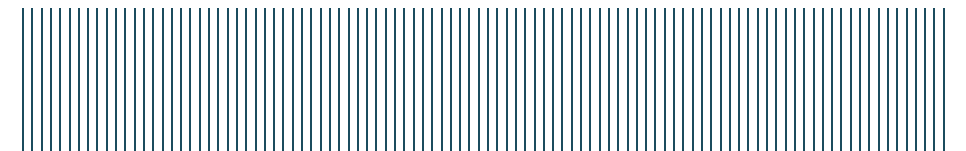
### PREVENTING DAMAGES CAUSED BY THERMAL SHOCK OR IMPACT

Surfalite® surfaces are heat resistant and can withstand a limited exposure to pots, pans or dishes at normal cooking temperature without visible damages. Although Surfalite® surfaces show higher heat resistance than any other stone countertop, they can be damaged by sudden and extreme thermal shocks. We recommend the use of trivets to avoid continued exposure of Surfalite® surfaces to sources of heat. Surfalite® surfaces are highly scratch resistant, but are not scratch proof. We recommend the use of cutting boards when cutting and preparing food.



### CHEMICALS TO BE AVOIDED

Avoid exposing Surfalite® to chemicals and solvents, especially paint removers, that might contain trichloroethane and methylene chloride. Keep solvents, acetone, alcohol, thinners, detergents containing bleach, laundry bluing, highly alkaline liquids such as bleach, caustic soda or oven cleaners, acids, oily soaps, descalers, markers or ink, abrasive and micro-abrasive detergents away from the surface. Should any of the above listed liquids drip on the advanced surface, remove it immediately and thoroughly rinse with water. Even though an occasion exposure to alkaline products does not damage Surfalite® surfaces, highly alkaline detergents (high pH) are not recommended for daily cleaning. The use of highly alkaline detergents may damage the surface of the material. It is recommended to use only a neutral silicone to install the countertop.









# Technical Data

Product: Surfalite Series  
Composition: 10 - 17 % Resin/83 - 90 % Blend of selected minerals  
Surface finish: Polished, Silk  
Slab size (cm): 330x165  
Slab thickness\* (cm): 0.7

PROPERTY	NORMATIVE	VALUE	NOTE
Apparent Density	EN 14617-1	1950 - 2450 Kg/m3	---
Water Absorption	EN 14617-1	≤ 0,10 %	---
Flexural Strength	EN 14617-2	> 40 MPa	---
Abrasion Resistance	EN 14617-4	27 - 31 mm	---
Frost Resistance	EN 14617-5	KM <sub>f25</sub> 0,9 - 1,2	---
Thermal Shock Resistance	EN 14617-6	Δm% ≤ 0,07 %	Test temperature: 70°C
		ΔR <sub>f,25</sub> ≤ 20 %	
Impact Resistance	EN 14617-9	1 - 5 J	---
Chemical Resistance	EN 14617-10	C4	---
Coefficient of Linear Thermal Expansion	EN 14617-11	25 - 65 x 10 <sup>-6</sup> °C <sup>-1</sup>	---
Electric Resistivity	EN 14617-13	ρ <sub>s</sub> ≥ 10 <sup>10</sup> Ω	Referring to the surface
		ρ <sub>v</sub> ≥ 10 <sup>8</sup> Ω m	Referring to the volume
Compressive Strength	EN 14617-15	150 - 250 MPa	---
Thermal Conductivity	EN 12524	1,3 W/(m K)	From tabulated values



WHITE FEATHER & SAND DUNES



SANTA MARGHERITA  
EFFICIENCY BONDED 

Santamargherita S.P.A.  
Via del Marmo, 1098  
37020 - Volargne (VR), Italy

+39 045 6835888  
[info@santamargherita.net](mailto:info@santamargherita.net)

